



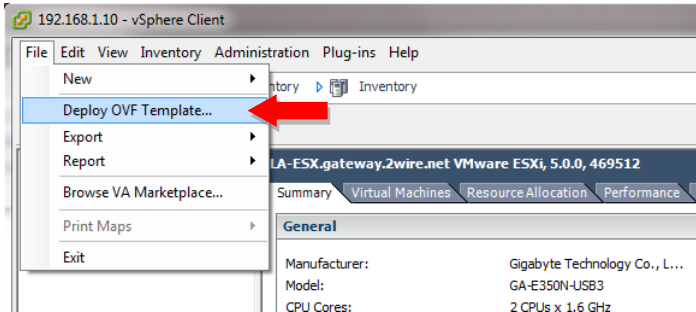
How to deploy Xpress Send Hosted into VMWare ESXi

Simple Instructions:

- Download the **"XS-Hosted.ova"** file to your computer.
- Open your **vSphere Client** on the server you wish to deploy XS on.
- Click File -> **Deploy OVF Template**.
- Click **"Browse"** and select the **"XS-Hosted.ova"** file. Click **Next**.
- Confirm all options and click **Next**.
- Give the new virtual machine a name (Default: XS-Hosted). Click **Next**.
- Select your hard drive options and click **Next**.
- Confirm all settings and click **Finish**.
- After the deployment is complete set the VM to **Auto Start**.
 - o Highlight your host.
 - o Click **Configuration**.
 - o Click **Virtual Machine Startup/Shutdown**.
 - o Click **Properties**.
 - o Check the box for **"Allow virtual machines to start and stop automatically with the system"**.
 - o Move your new VM up into the **"Automatic Startup"** section.
 - o Click **OK**.
- If you wish to install VMWare Tools follow the documentation: **"Installing VMTools on XS Hosted"**.
- Power on the VM and open the **Console** tab.
- Once the VM boots **make note of the IP Address** that it was given by DHCP.

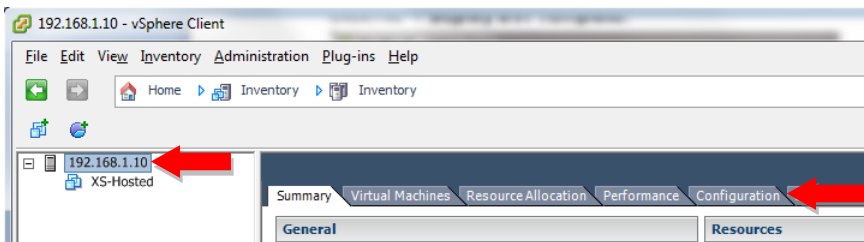
Detailed Instructions:

- Download the “XS-Hosted.ova” file to your computer.
- Open your **vSphere Client** on the server you wish to deploy XS on.
- Click File -> **Deploy OVF Template**.

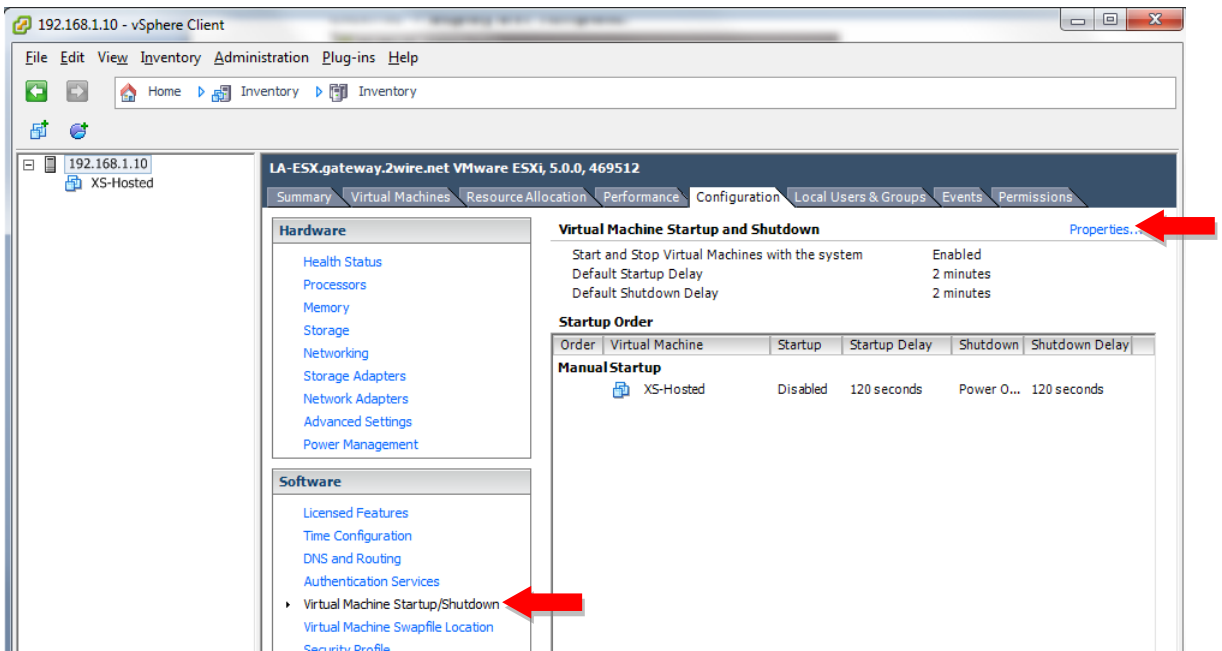


- Click “**Browse**” and select the “XS-Hosted.ova” file. Click **Next**.
- Confirm all options and click **Next**.
- Give the new virtual machine a name (Default: XS-Hosted). Click **Next**.
- Select your hard drive options and click **Next**.
 - o Default for XS is “**Thin Provisioned**” but any type will work.
- Confirm all settings and click **Finish**.
- After the deployment is complete set the VM to **Auto Start**.

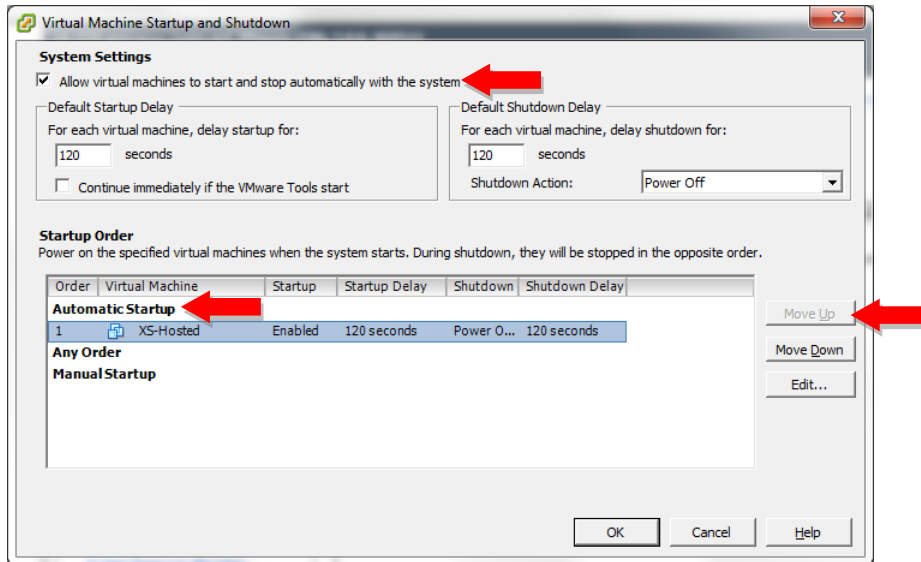
- o Highlight your host.
- o Click **Configuration**.



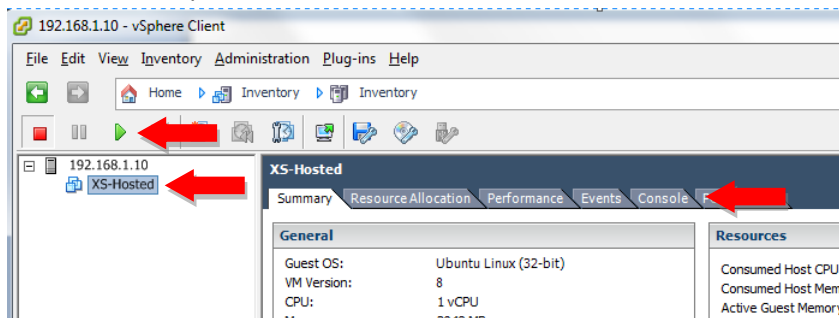
- o Click **Virtual Machine Startup/Shutdown**.
- o Click **Properties**.



- Check the box for “Allow **virtual machines to start and stop automatically with the system**”.
- Move your new VM up into the “**Automatic Startup**” section.
- Click **OK**.



- Power on the VM and open the **Console** tab.



- Once the VM boots **make note of the IP Address** that it was given by DHCP.

